

▶ Effective Insulation

The insulation installation in this home has been independently verified and graded in order to qualify for ENERGY STAR®.



ENERGY STAR®, a U.S. Environmental Protection Agency program, helps us all save money and protect our environment through energy efficient products and practices. For more information, visit www.energystar.gov



LEARN MORE AT
energystar.gov

Met-Ed®
Penelec®
Penn Power®
West Penn Power®

FirstEnergy Companies

▶ High Performance Windows

This home features energy efficient windows to help keep heat in during the winter and out during the summer.



ENERGY STAR®, a U.S. Environmental Protection Agency program, helps us all save money and protect our environment through energy efficient products and practices. For more information, visit www.energystar.gov



LEARN MORE AT
energystar.gov

Met-Ed®
Penelec®
Penn Power®
West Penn Power®

FirstEnergy Companies

▶ Third Party Verification

An independent *home energy rater* has conducted onsite testing and inspections on this house to verify the energy efficiency measures.



ENERGY STAR®, a U.S. Environmental Protection Agency program, helps us all save money and protect our environment through energy efficient products and practices. For more information, visit www.energystar.gov



LEARN MORE AT
energystar.gov

Met-Ed®
Penelec®
Penn Power®
West Penn Power®

FirstEnergy Companies

▶ Effective Air Sealing

Holes and cracks in this home's "envelope" have been sealed to reduce energy loss, drafts, and noise. Care has been taken to ensure that enough fresh air enters the house.



ENERGY STAR®, a U.S. Environmental Protection Agency program, helps us all save money and protect our environment through energy efficient products and practices. For more information, visit www.energystar.gov



LEARN MORE AT
energystar.gov

Met-Ed®
Penelec®
Penn Power®
West Penn Power®

FirstEnergy Companies

▶ Effective Duct Sealing

This home's ductwork has been carefully sealed to reduce the loss of conditioned air through leakage.



ENERGY STAR®, a U.S. Environmental Protection Agency program, helps us all save money and protect our environment through energy efficient products and practices. For more information, visit www.energystar.gov



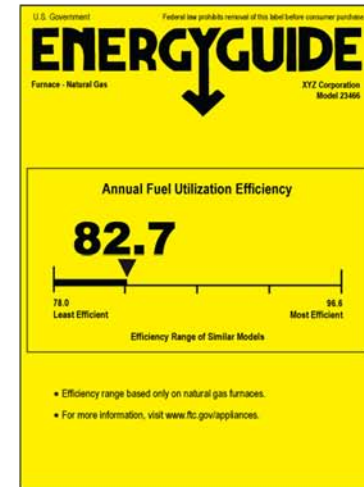
LEARN MORE AT
energystar.gov

Met-Ed®
Penelec®
Penn Power®
West Penn Power®

FirstEnergy Companies

▶ Energy Efficient Equipment

The energy-efficient heating and cooling equipment in this home improves comfort and decreases fuel bills.



ENERGY STAR®, a U.S. Environmental Protection Agency program, helps us all save money and protect our environment through energy efficient products and practices. For more information, visit www.energystar.gov



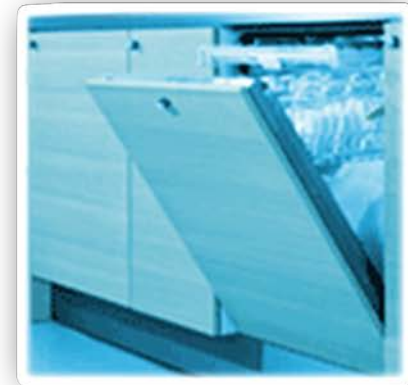
LEARN MORE AT
energystar.gov

Met-Ed®
Penelec®
Penn Power®
West Penn Power®

FirstEnergy Companies

▶ Energy Efficient Products

This home is equipped with ENERGY STAR® qualified products to reduce energy use.



ENERGY STAR®, a U.S. Environmental Protection Agency program, helps us all save money and protect our environment through energy efficient products and practices. For more information, visit www.energystar.gov



LEARN MORE AT
energystar.gov

Met-Ed®
Penelec®
Penn Power®
West Penn Power®

FirstEnergy Companies

▶ Programmable Thermostat

This home is equipped with a programmable thermostat to save energy when you are not at home.



ENERGY STAR®, a U.S. Environmental Protection Agency program, helps us all save money and protect our environment through energy efficient products and practices. For more information, visit www.energystar.gov



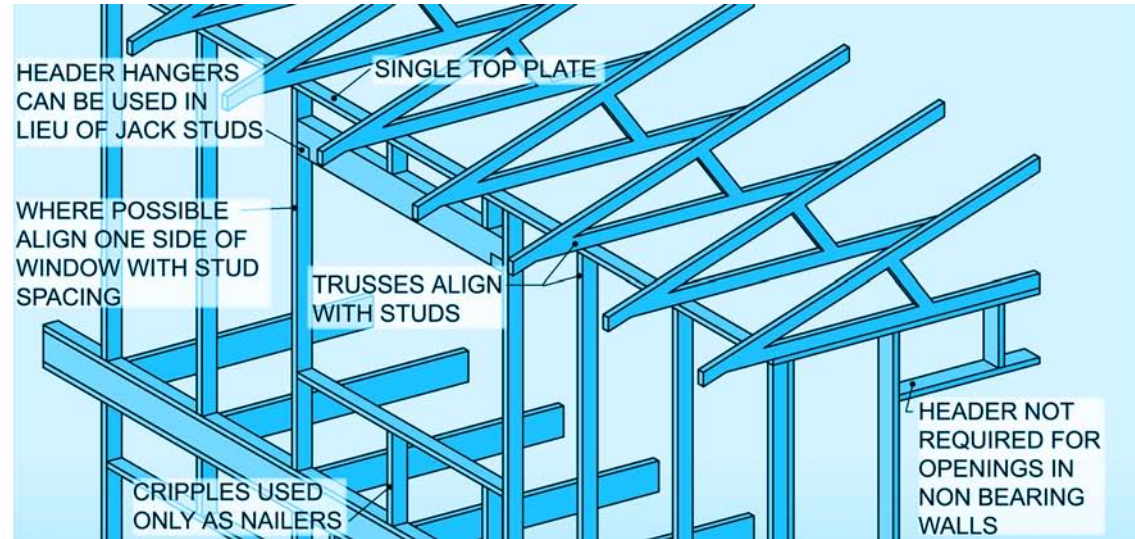
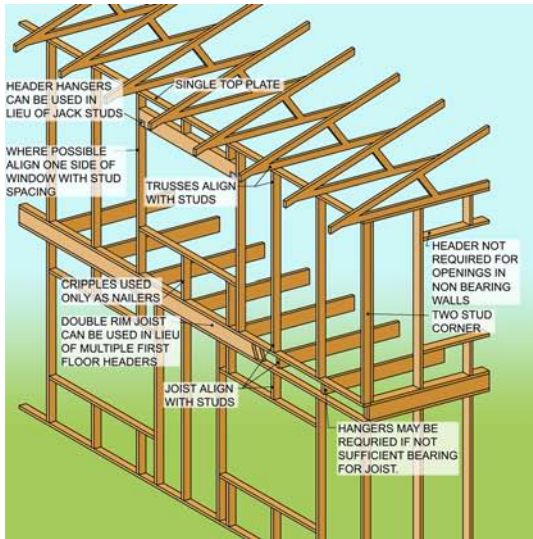
LEARN MORE AT
energystar.gov

Met-Ed®
Penelec®
Penn Power®
West Penn Power®

FirstEnergy Companies

▶ Advanced Framing

This home features advanced framing construction techniques to reduce lumber usage while retaining structural integrity.



ENERGY STAR®, a U.S. Environmental Protection Agency program, helps us all save money and protect our environment through energy efficient products and practices. For more information, visit www.energystar.gov



LEARN MORE AT
energystar.gov

Met-Ed®
Penelec®
Penn Power®
West Penn Power®

FirstEnergy Companies

▶ Effective Moisture Control

This home is designed and built to control moisture. Moisture control is important to control allergens and structural problems and to increase occupant comfort.



ENERGY STAR®, a U.S. Environmental Protection Agency program, helps us all save money and protect our environment through energy efficient products and practices. For more information, visit www.energystar.gov



LEARN MORE AT
energystar.gov

Met-Ed®
Penelec®
Penn Power®
West Penn Power®

FirstEnergy Companies

▶ ERV/HRV Unit

This home is equipped with an *energy recovery* or *heat recovery ventilation unit*, which uses the energy in exhaust air to pre-condition fresh air as it enters the home.



ENERGY STAR®, a U.S. Environmental Protection Agency program, helps us all save money and protect our environment through energy efficient products and practices. For more information, visit www.energystar.gov



LEARN MORE AT
energystar.gov

Met-Ed®
Penelec®
Penn Power®
West Penn Power®

FirstEnergy Companies

▶ Increased levels of Insulation

ENERGY STAR® requires insulation r-values above state energy code requirements for added energy efficiency.



ENERGY STAR®, a U.S. Environmental Protection Agency program, helps us all save money and protect our environment through energy efficient products and practices. For more information, visit www.energystar.gov



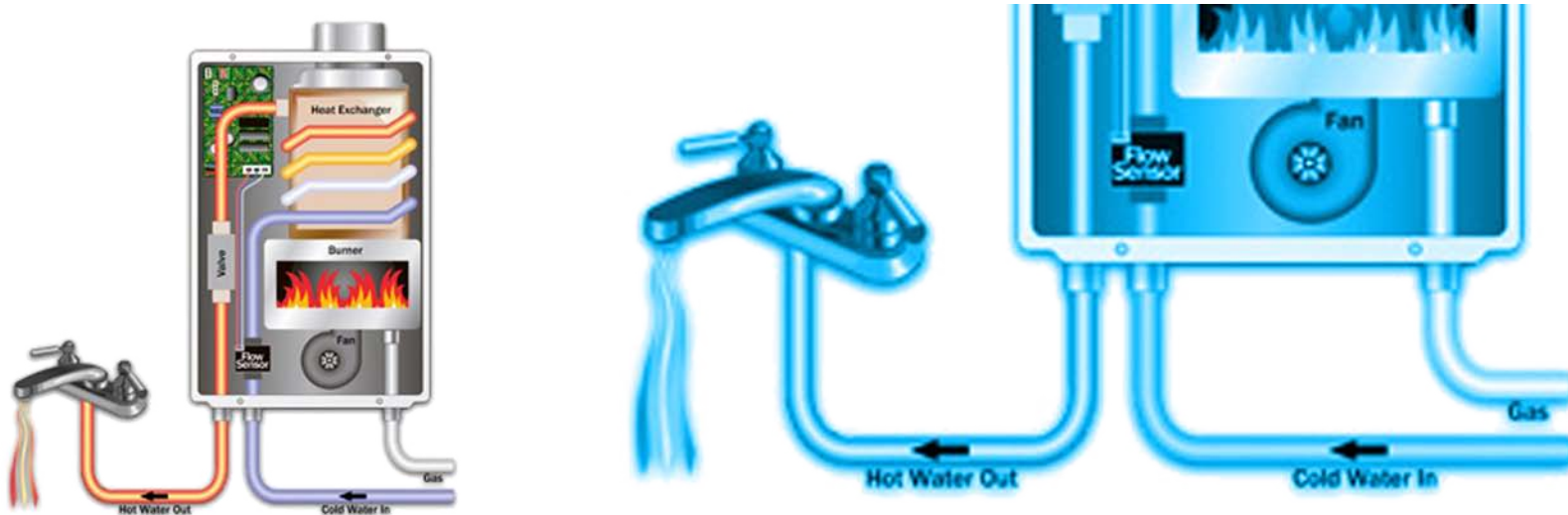
LEARN MORE AT
energystar.gov

Met-Ed®
Penelec®
Penn Power®
West Penn Power®

FirstEnergy Companies

▶ Tankless Water Heater

This home features a tankless water heater to eliminate stand by energy loss. Hot water is produced on demand.



ENERGY STAR®, a U.S. Environmental Protection Agency program, helps us all save money and protect our environment through energy efficient products and practices. For more information, visit www.energystar.gov



LEARN MORE AT
energystar.gov

Met-Ed®
Penelec®
Penn Power®
West Penn Power®

FirstEnergy Companies