

Export a Rating File – FirstEnergy New Homes Program

To upload your rating to Compass, you must upload both the building model (the .blg file) and the export file (the .mdb file). A rating (projected or confirmed) can be uploaded to the Compass server after the .mdb file is exported from REM/Rate.

Make sure the model is complete and functional

The screenshot shows the REM/Rate v 14.6.3.1 interface for a building model named 'FE PA NewHomeExport'. The 'Analysis' panel on the right displays the following data:

Program	Status
V3.0 ENERGY...	Fails
V3.0* ENERGY...	Fails
V3.1 ENERGY...	Fails
Tax Credit	Fails
DOE Zero Ene...	Fails
HERS Index	61
NY HERS Score	

Code	Status
IECC 2015	Fails
IECC 2012	Fails
IECC 2009	Passes
IECC 2006	Fails
IECC 2004	Fails
IECC 2003	Passes
IECC 2001	Passes
IECC 1998	Passes
Iowa Code	Fails
Illinois Code	Fails
Michigan Code	Fails
Nevada Code	Passes
NY-ECCC 2010	Fails
North Carolina ...	Passes
North Carolina ...	Passes

The 'Errors/Warnings' panel at the bottom left shows: 'No errors or warnings exist.'

Successful, accurate model:

- 1- Run the Quick Analysis
- 2- Verify on the compliance tab what the HERS index is, and whether or not it passes ENERGY STAR
- 3- Look for any errors or warnings. If there are warnings that do not need correction in your model, consider entering an explanation in the notes field for the file.

Make sure the location and builder information is entered

The image shows a data entry form with three sections, each highlighted by a red circle with a white number:

- 1** Building Name: FE PA NewHomeExport
- 2** Property Information:
 - Owner's Name: Carl and Janice Homeowner
 - Property Address: 123 Main St
 - City: Erie
 - State: PA (dropdown menu)
 - Zip: 16501
 - Phone Number: (empty field)
- 3** Builder Information:
 - Builder's Name: Rated Quality Builders
 - Builder's Address: 123 Main St

Basic data entry:

- 1- *Building Name* should be unique among your ratings. You will use this to identify which home you are uploading to Compass
- 2- The *Property Address* should match the address you enter into Compass
- 3- The *Builder's Name* should also be the same as it is entered into Compass

Make sure the Rater information is entered and complete

Rating Organization Information:

1 Rating Organization Name: PSD Consulting

Address: 247 Chestnut St.

City: Meadville

State: PA Zip: 16335

Phone Number: 814-282-3689

Website:

2 Rater's Name: Mike Arblaster

Email: marblaster@psdconsulting.com

RESNET:

Provider ID (AIN): 1998-153 Rater ID (RTIN): 6009857

Sampled Set ID: 00000000 Registry ID:



Energy Rating Information:

3 Rating Date: 6/3/2106

4 Rating Type: Confirmed

Reason For Rating: New Home

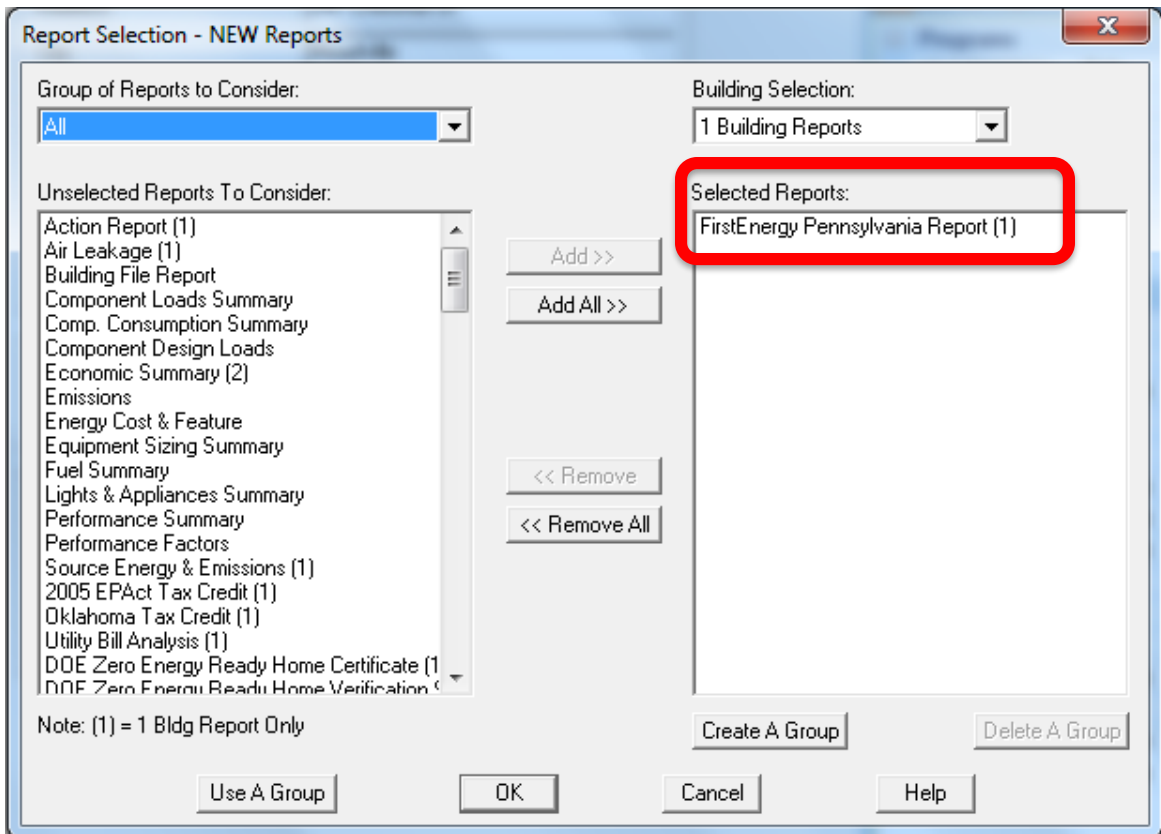
5 Rating Number: 2016-022-ES

Basic Rating Information:

- 1- *Rating Organization Name* should be your company name, as listed in Green Energy Compass
- 2- *Rater's Name* also should be as listed in Compass
- 3- *Rating Date* is the date of the plan review, for a *Projected Rating*, or the date of the performance testing and field verification, for a *Confirmed Rating*
- 4- You can submit a *Projected Rating* for incentive preapproval, at the plan review stage, or simply submit the *Confirmed Rating* at time of completion.
- 5- The *Rating Number* should be unique to this address. Your Accredited HERS Provider may have assigned you numbers, or a numbering strategy, for each rating

Run the FirstEnergy New Homes Report



It is titled **FirstEnergy Pennsylvania Report**

A qualifying home will use at least 15% less energy than the reference home


FirstEnergy Pennsylvania Energy Efficient New Home Report

Property Carl and Janice Homeowner 123 Main St Erie, PA 16501	Organization Performance Systems Development 814-282-3689 Mike Arblaster	HERS Confirmed 6/3/2106 Rating No:2016-022-ES RaterID:6009857
Weather: Erie, PA FE PA NewHomeExport FENHNewHomesExport.blg	Builder Rated Quality Builders	

Confirmed: - No Registry ID

This home uses 24% less energy than a standard new home.
It qualifies for participation in the New Homes Program at the 15% savings over code level

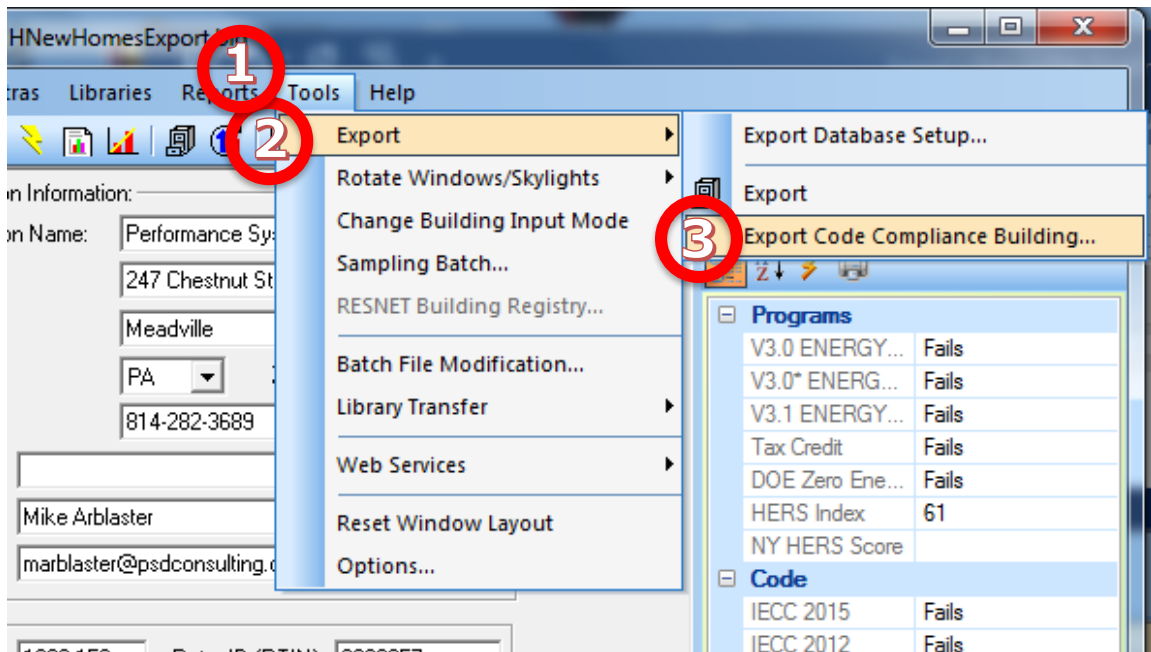
Annual Consumption(MMBtu/Yr)			Normalized, Modified End-Use Loads(MMBtu/Yr)		
	FirstEnergy			ENERGY	
	Reference	As Designed		STAR v3.0	As Designed
Heating	105.2	73.6	Heating	37.8	36.4
Cooling	4.5	2.2	Cooling	7.6	3.5
Water Heating	20.7	20.1	Water Heating	12.7	11.8
Lights & Appliances	26.6	22.6	Lights & Appliances	24.1	22.6
Photovoltaics	-0.0	-0.0	Total	82.3	74.2
Total	157.0	118.4	HERS Index	67	61



This home DOES NOT MEET the requirements for designation as an EPA ENERGY STAR Qualified Home.

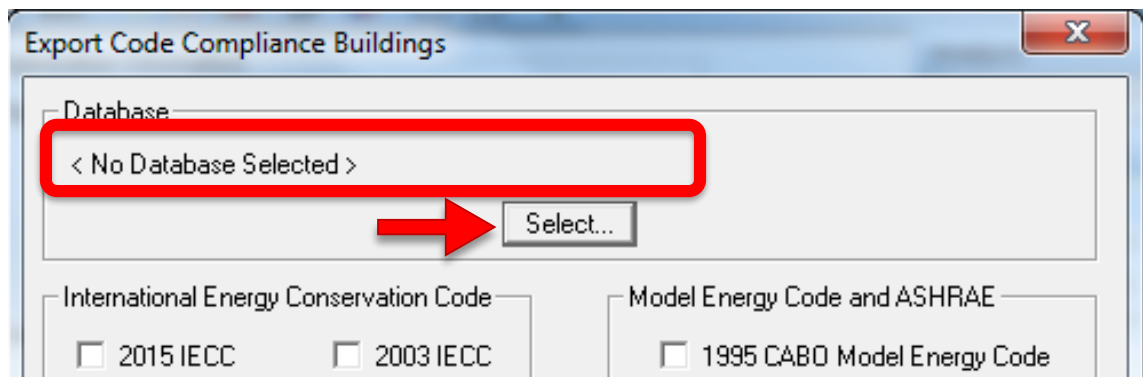
Make sure the home qualifies,
Also note if the home qualifies for the energy efficiency requirements for ENERGY STAR. You will be asked, in Compass, to confirm that other ENERGY STAR requirements have been met, such as the *Thermal Bypass Checklist*. Participation in the **FirstEnergy New Homes** program does not require ENERGY STAR, but there are increased incentives for ENERGY STAR Qualified homes.

Export to a database file



- 1- select the **Tools** menu
- 2- choose **Export**
- 3- **Export Code Compliance Building...**

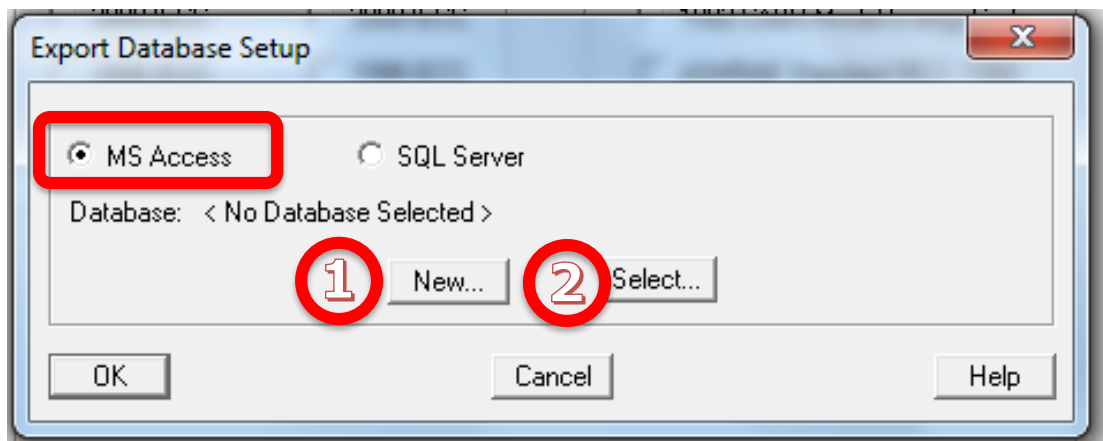
Make sure you have a database (.mdb file) selected



Typically, you will use a different export database for each building you are rating. If the database listed at the top is the .mdb file you wish to use, you can skip the following steps

To create a *new export database*, or to select a *different export database*, click the **Select...** button.

Export Database Setup

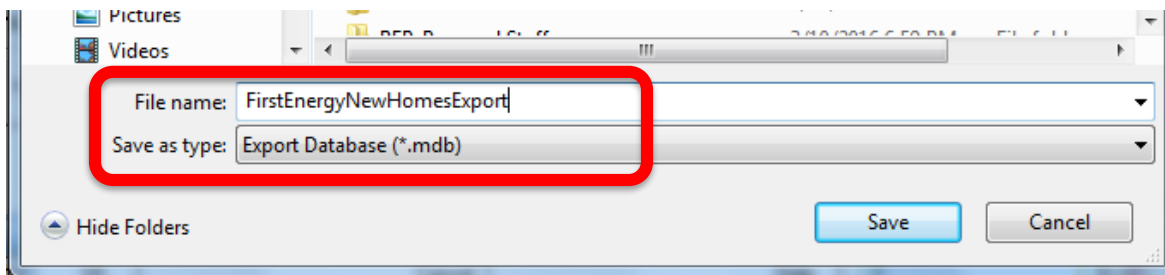


The database format is **MS Access**.

1- To create a new database, click **New...**

2- if you will be exporting to an already existing database, click **Select...**

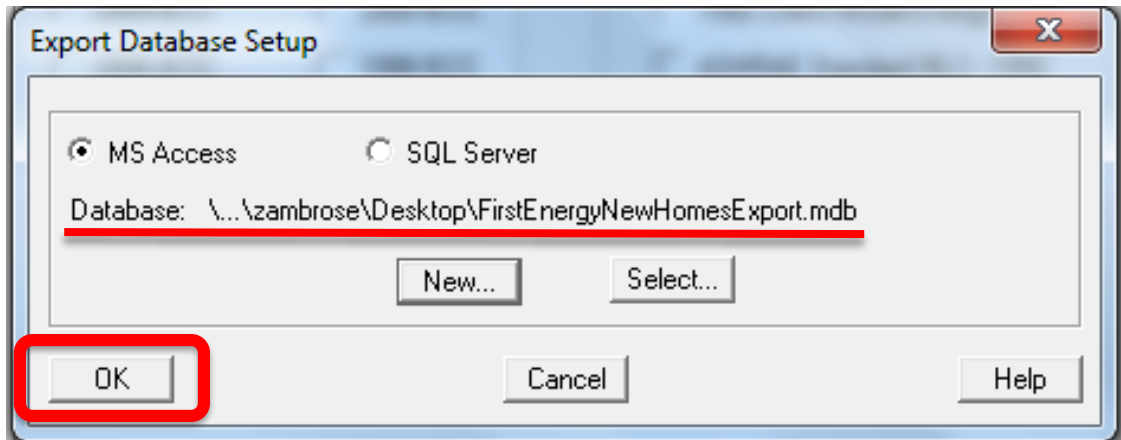
Create an export database



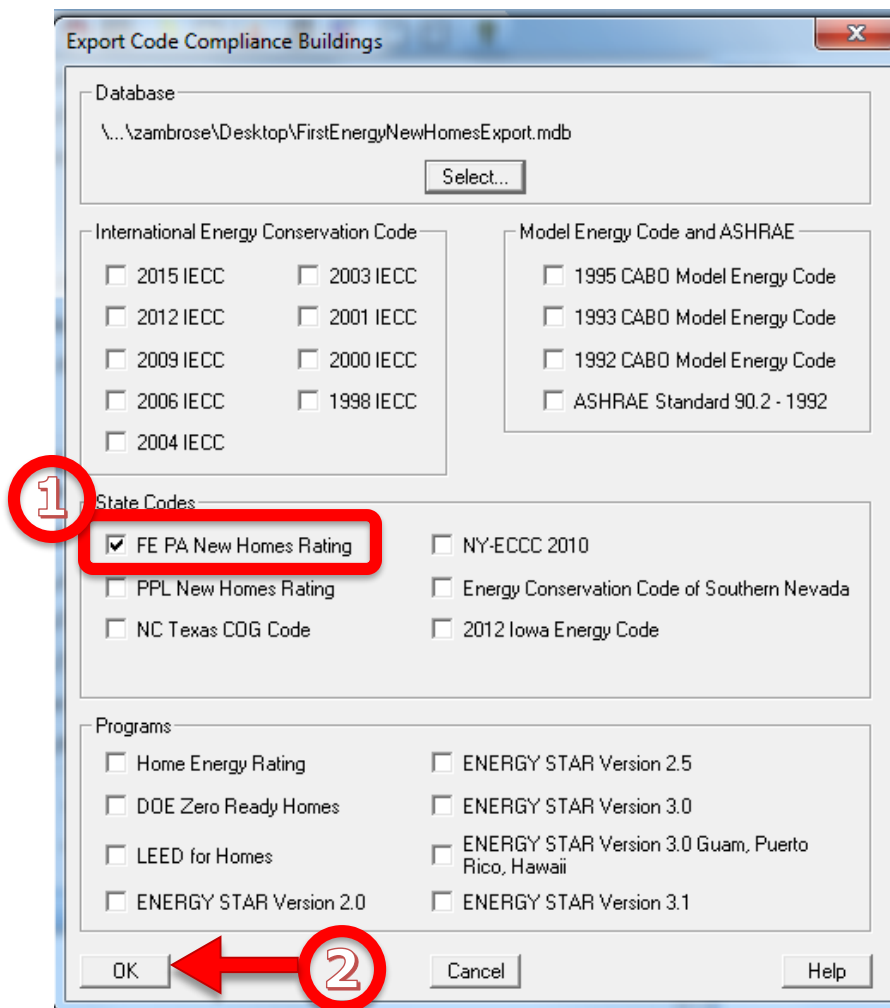
Choose a name that is useful for your record-keeping. The database can have any *Windows* file name. You should create a separate database file for each home you rate, and in most cases you'll want to store it with the REM/rate building file.

Note: REM/rate does not store your database selection with each .big file. When you export to multiple databases, you will have to select the database each time you export a different building.

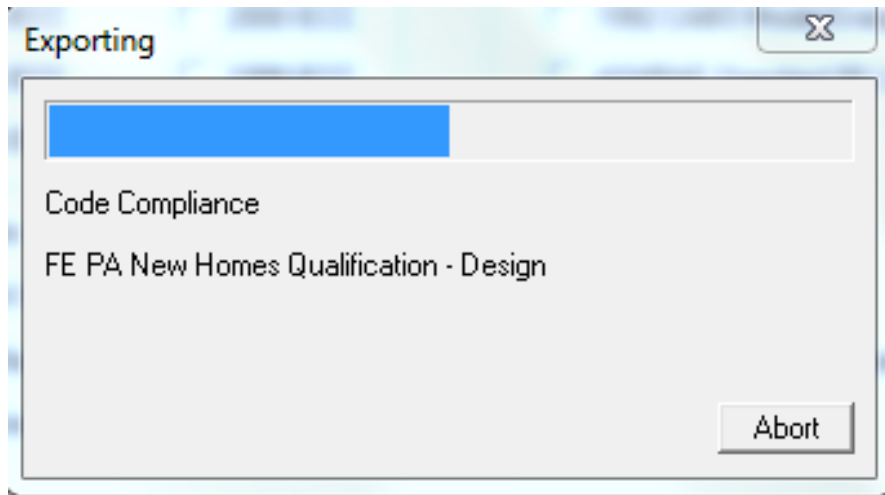
Verify the correct database (.mdb) is listed, click OK



Select the FirstEnergy New Homes Rating for export



- 1- Make sure **FE PA New Homes Rating** has a check next to it.
- 2- Click **OK** to generate the export



The rating is exported to the database, and ready for upload to Compass